

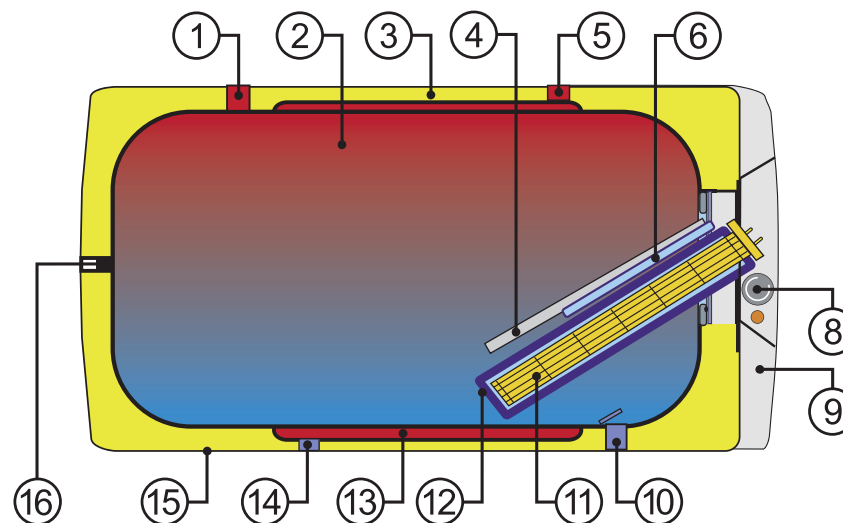
OKCV 125
OKCV 160

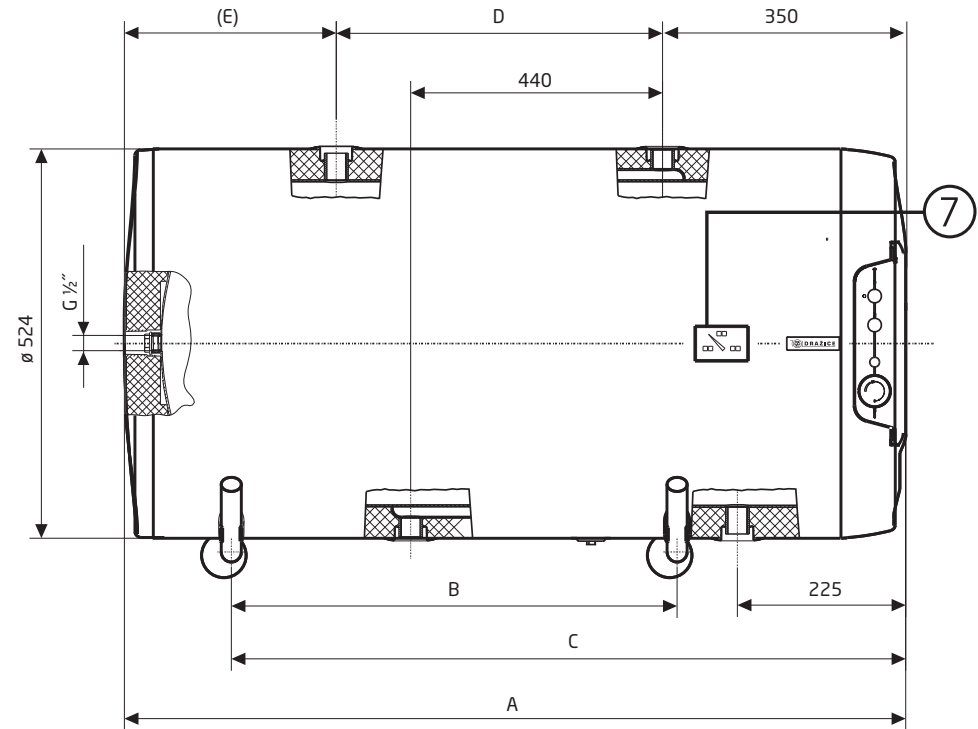
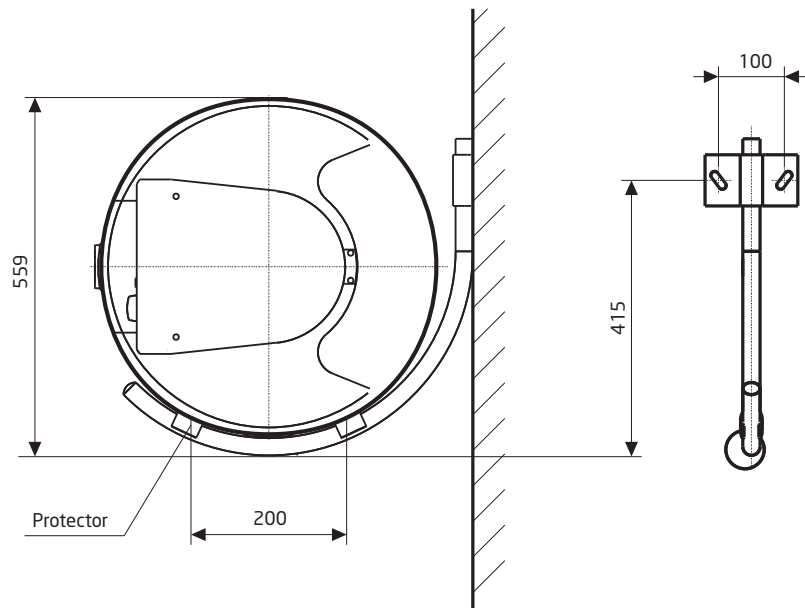
COMBINED STORAGE WATER HEATERS

Wall-mounted, horizontal - exchanger 0,7 m²

COMBINED water storage heater for horizontal mounting

- 1 Discharge pipe for hot water
- 2 Enamelled steel vessel
- 3 Polyurethane CFC-free insulation - 42 mm
- 4 Mg anode
- 5 Inlet for heating water
- 6 Operating and safety thermostat well
- 7 Thermometer
- 8 Operating thermostat with external control
Safety thermostat
- 9 Cover for electrical equipment
- 10 Filling pipe for cold water
- 11 **DRY CERAMIC HEATING ELEMENT**
- 12 Heating element well
- 13 Heat exchanger
- 14 Outlet for heating water
- 15 Water heater jacket
- 16 Circulation





Hanging brackets are not included in the delivery (ACCESSORIES).

Type	OKCV 125	OKCV 160
Volume [l]	125	152
Max. operating overpressure in the tank [MPa]	0,6	0,6
Max. operating overpressure in the exchanger [MPa]	0,4	0,4
Voltage [V/Hz]	1 PE-N~230/50	1 PE-N~230/50
Connected load [kW]	2	2
Electrical protection	IP 44	IP 44
Maximum HUW temperature [°C]	80	80
Recommended HUW temperature [°C]	60	60
Height x Diameter [mm]	1046x524	1235x524
Maximum weight of heater without water [kg]	59	68
Heating period with ele. en. from 10 °C to 60 °C [h]	3,8	5
Heat loss [kWh/24h]/energy efficiency class	1.09/C	1.39/C
Exchanger heating surface [m ²]	0,7	0,7
Rated exchanger output with a heating water temperature of 80 °C and flow of 720 l/h [kW]	16,8	16,8
Heating period with exchanger from 10 °C to 60 °C [min]	26	35
Rated exchanger output with a heating water temperature of 80 °C and flow of 310 l/h [kW]	10,3	10,3
Heating period with exchanger from 10 °C to 60 °C [min]	43	53

Type	A	B	C	D	E
OKCV 125	1046	600	908	513	184
OKCV 160	1235	700	1008	650	230

All inlets and outlets have an internal G 3/4" thread.

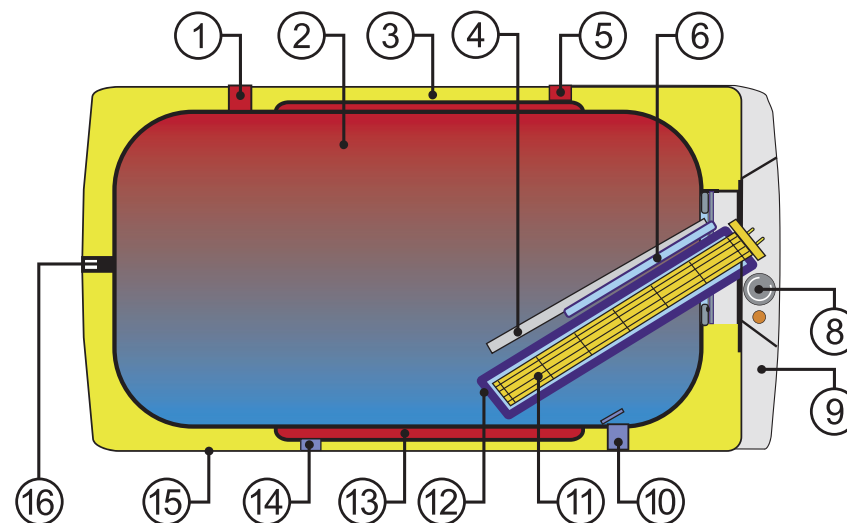
OKCV 180
OKCV 200

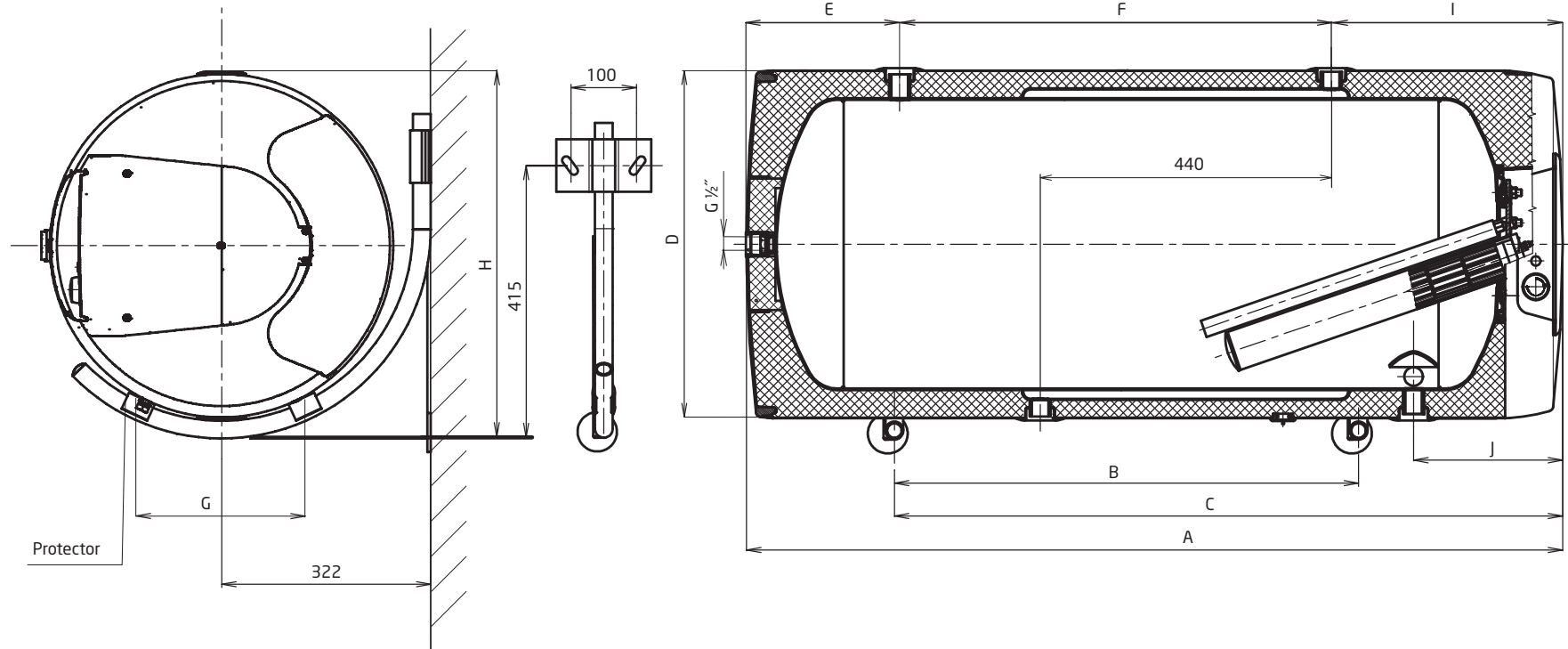
COMBINED STORAGE WATER HEATERS

Wall-mounted, horizontal - exchanger 0,75 m²

COMBINED water storage heater for horizontal mounting

- 1 Discharge pipe for hot water
- 2 Enamelled steel vessel
- 3 Polyurethane CFC-free insulation - 42 mm
- 4 Mg anode
- 5 Inlet for heating water
- 6 Operating and safety thermostat well
- 7 Thermometer
- 8 Operating thermostat with external control
Safety thermostat
- 9 Cover for electrical equipment
- 10 Filling pipe for cold water
- 11 **DRY CERAMIC HEATING ELEMENT**
- 12 Heating element well
- 13 Heat exchanger
- 14 Outlet for heating water
- 15 Water heater jacket
- 16 Circulation





Hanging brackets are not included in the delivery (ACCESSORIES).

Type	OKCV 180	OKCV 200
Volume [l]	180	200
Max. operating overpressure in the tank [MPa]	0.6	0.6
Max. operating overpressure in the exchanger [MPa]	0.4	0.4
Voltage [V/Hz]	1 PE-N~230/50	1 PE-N~230/50
Connected load [kW]	2.2	2.2
Electrical protection	IP 44	IP 44
Maximum HUW temperature [°C]	80	80
Recommended HUW temperature [°C]	60	60
Height x Diameter [mm]	1187x584	1287x584
Maximum weight of heater without water [kg]	80	84
Heating period with ele. en. from 10 °C to 60 °C [h]	5	5.5
Heat loss [kWh/24h]/energy efficiency class	1.39/C	1.4/B
Exchanger heating surface [m ²]	0.75	0.75
Rated exchanger output with a heating water temperature of 80 °C and flow of 720 l/h [kW]	18	18
Heating period with exchanger from 10 °C to 60 °C [min]	38	43
Rated exchanger output with a heating water temperature of 80 °C and flow of 310 l/h [kW]	11	11
Heating period with exchanger from 10 °C to 60 °C [min]	63	72

The OKCV 180, 200 heaters can be made to order with a heating element with 4000 W and 3 PE-N 400V/50Hz connection. Heating time is decreased to half the value stated in the table.

Type	A	B	C	D	E	F	G	H	I	J
OKCV 180	1187	600	907	584	255	570	240	616	358	252
OKCV 200	1287	600	907	584	255	670	240	616	362	252

All inlets and outlets have an internal G 3/4" thread.